

# zanotta:

COMPOSIZIONE: 54 % LANA 23% COTONE 11%POLIAMMIDE 11%ALPACA 1%ELASTAN  
COMPOSITION: 54% WOOL 23% COTTON 11% NYLON 11% ALPACA 1% ELASTANE  
COMPOSITION: 54% LAINE 23% COTON 11% POLYAMIDE 11% ALPAGA 1% ELASTHANNE  
ZUSAMMENSTELLUNG: 54% WOLLE 23% BAUMWOLLE 11% POLYAMID 11% ALPAKA 1% ELASTHAN  
COMPOSICION: 54% LANA 23% ALGODON 11% POLIAMIDA 11% ALPACA 1%ELASTANO

# terso cat. 30



HEIGHT: 140 cm

LIGHT RESISTANCE: 4/5

ABRASION: 50.000

WEIGHT: 693 g/ml

SHRINKAGE: +/- 2 %

PILING: 3/4



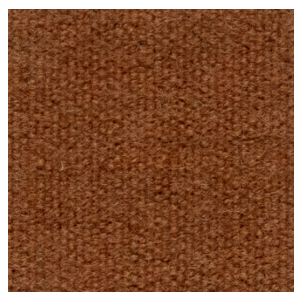
32901



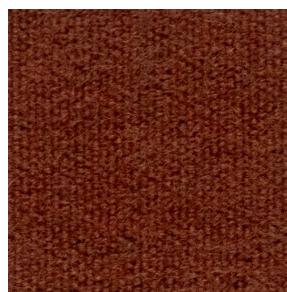
32940



32917



32935



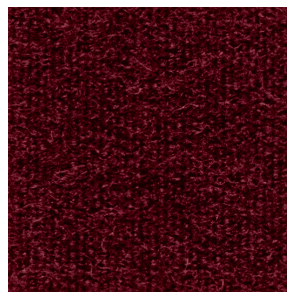
32930



32934



32926



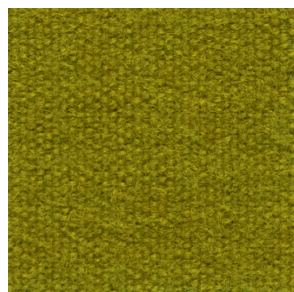
32920



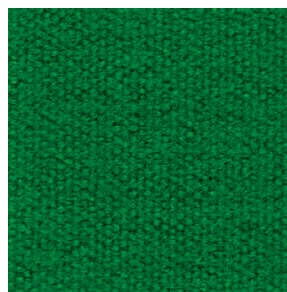
32916



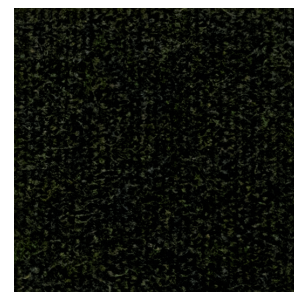
32913



32945



32946



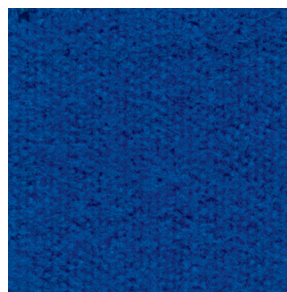
32948



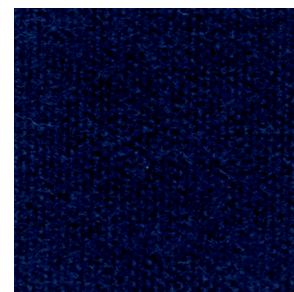
32961



32950



32956



32957

TEL. +39.0362.4981  
WWW.ZANOTTA.IT

ZANOTTA SPA VIA VITTORIO VENETO 57  
20834 NOVA MILANESE MB - ITALIA



# zanotta:

# ecofire cat. 30

COMPOSIZIONE: 71% PVC 27% COTONE 2% POLIURETANO - RESISTENTE AL FUOCO

COMPOSITION: 71% PVC 27% COTTON 2% POLYURETHANE - FLAME RETARDANT

COMPOSITION: 71% PVC 27% COTON 2% POLYURÉTHANE - FEU ENDURANCE

ZUSAMMENSTELLUNG: 71% PVC 27% BAUMWOLLE 2% POLYHURETHAN - FEUERBESTÄNDIG

COMPOSICION: 71% PVC 27% ALGODÓN 2% POLIURETANO - RESISTIENTE AL FUEGO



TEL. +39.0362.4981 FAX +39.0362.451038  
WWW.ZANOTTA.IT

ZANOTTA SPA VIA VITTORIO VENETO 57  
20834 NOVA MILANESE MB - ITALIA



31601



31627



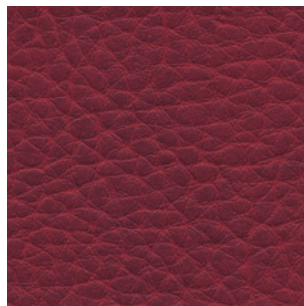
31641



31603



31602



31629



31626



31605



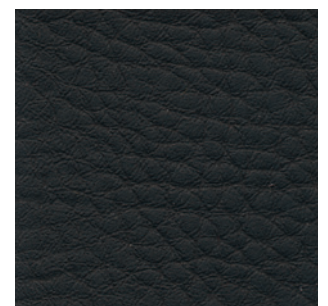
31631



31616



31657



31606



COMPOSIZIONE: 100% POLIPROPILENE ADATTO PER USO ESTERNO  
COMPOSITION: 100% POLYPROPYLEN SUITABLE FOR OUTDOOR USE  
COMPOSITION: 100% POLYPROPYLEN INDIQUÉ POUR UN USAGE EXTÉRIEUR  
ZUSAMMENSTELLUNG: 100% POLYPROPYLEN PASSEND FÜRS FREIE  
COMPOSICION: 100% POLIPROPILENO INDICADO PARA USO EXTERIOR

# Talasso



Cat. 30



26003



26093



26030



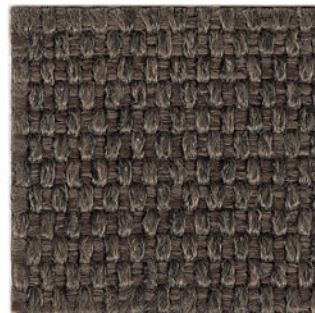
26090



26031



26091



26075



26098



26007



26097



26016



26096



26004



26094



26005



26095



COMPOSIZIONE: 72% LINO 14% COTONE 14% VISCOSA  
COMPOSITION: 72% FLAX 14% COTTON 14% VISCOSE  
COMPOSITION: 72% LIN 14% COTON 14% VISCOSE  
ZUSAMMENSTELLUNG: 72% LEINEN 14% BAUMWOLLE 14% VISCLOSE  
COMPOSICION: 72% LINO 14% ALGODON 14% VISCOSA



27601



27617



27625



27642



27602



27654



27640



27644



27603



27614



27656



27627



27641



27616



27605



27606

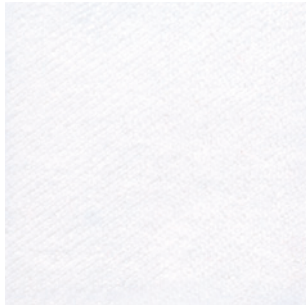


# zanotta:

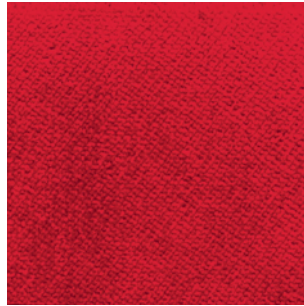
COMPOSIZIONE: 100% POLIESTERE - RESISTENTE AL FUOCO  
COMPOSITION: 100% POLYESTER - FLAME RETARDANT  
COMPOSITION: 100% POLYESTER - FEU ENDURANCE  
ZUSAMMENSTELLUNG: 100% POLYESTER - FEUERBESTÄNDIG  
COMPOSICION: 100% POLIÉSTER - RESISTIENTE AL FUEGO

# teatro

## cat. 30



26901



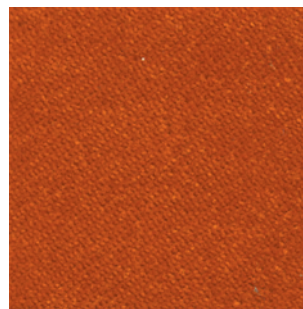
26927



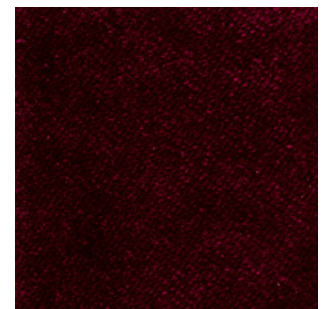
26904



26917



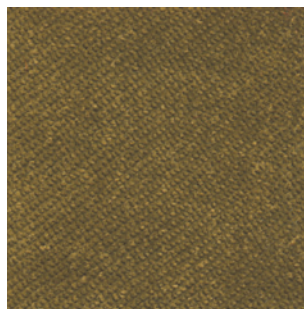
26926



26929



26931



26943



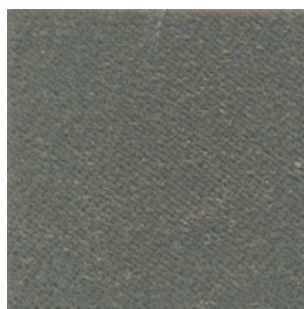
26942



26944



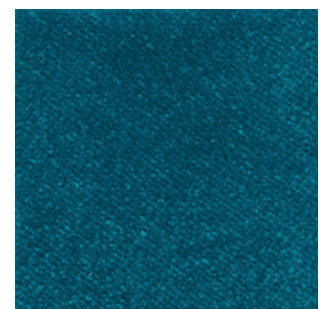
26935



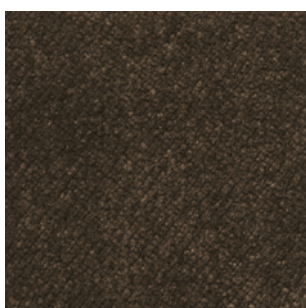
26908



26952



26940



26936



26905



26906



26957

TEL. +39.0362.4981 FAX +39.0362.451038  
WWW.ZANOTTA.IT

ZANOTTA SPA VIA VITTORIO VENETO 57  
20834 NOVA MILANESE MB - ITALIA



# zanotta:

COMPOSIZIONE: **100% COTONE**  
COMPOSITION: **100% COTTON**  
COMPOSITION: **100% COTON**  
ZUSAMMENSTELLUNG: **100% BAUMWOLLE**  
COMPOSICION: **100% ALGODON**

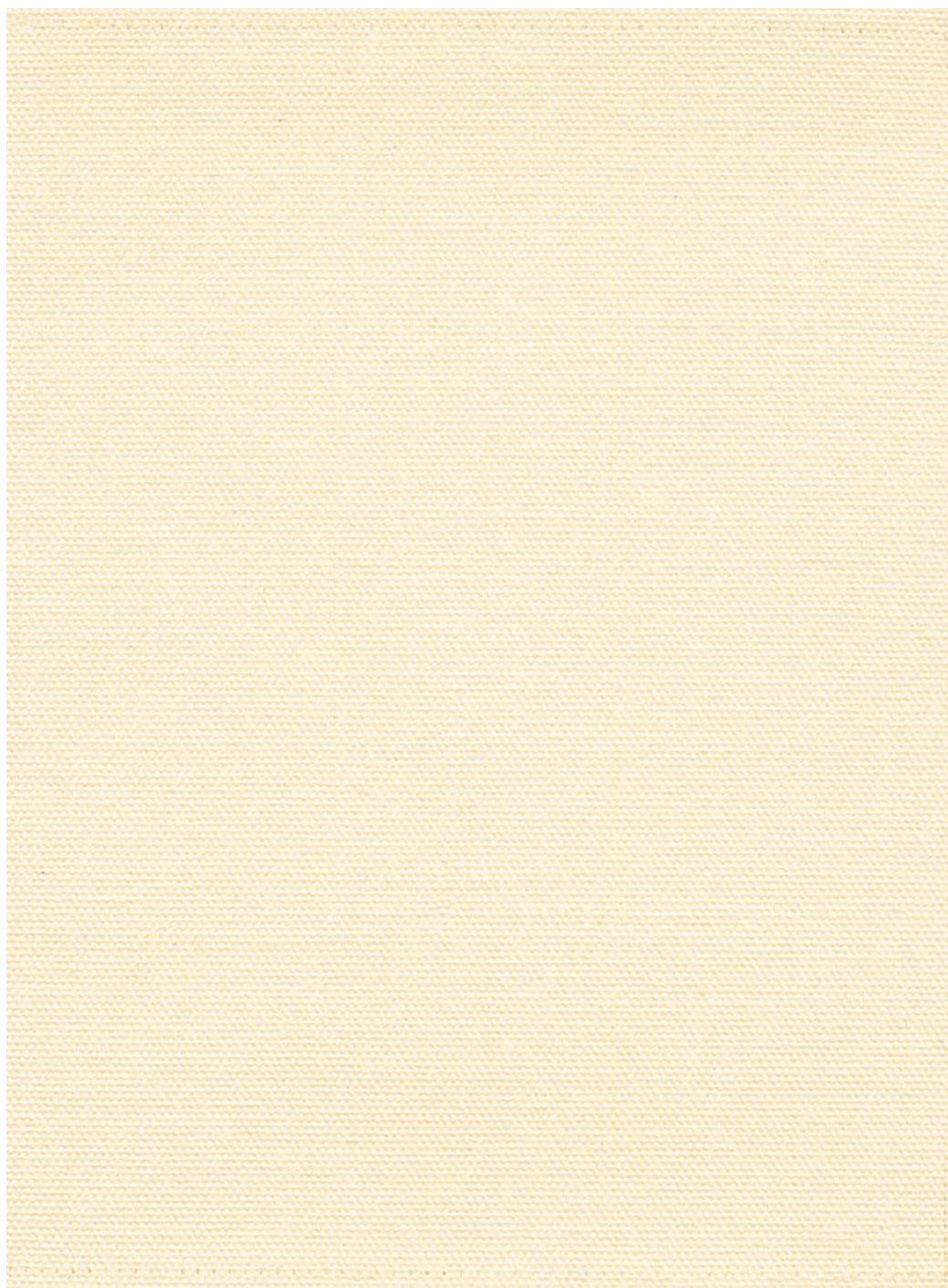
# telastrong

## cat. 30



TEL. +39.0362.4981 FAX +39.0362.498900  
WWW.ZANOTTA.IT

ZANOTTA SPA VIA VITTORIO VENETO 57  
20834 NOVA MILANESE MB - ITALIA



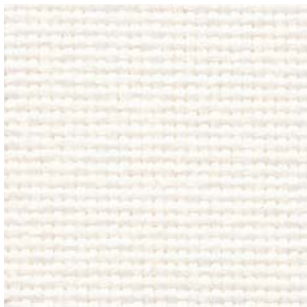


# zanotta:

COMPOSIZIONE: 100% POLIESTERE RESISTENTE AL FUOCO  
COMPOSITION: 100% POLYESTER FLAME RETARDANT  
COMPOSITION: 100% POLYESTER FEU ENDURANCE  
ZUSAMMENSTELLUNG: 100% POLYESTER FEUERBESTÄNDIG  
COMPOSICION: 100% POLIÉSTER RESISTIENTE AL FUEGO

# teolo

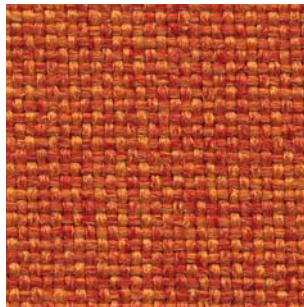
## cat. 30



30602



30654



30617



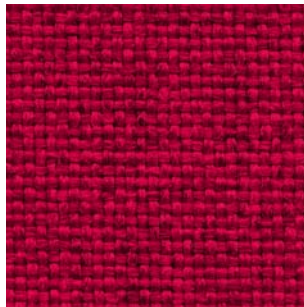
30614



30607



30655



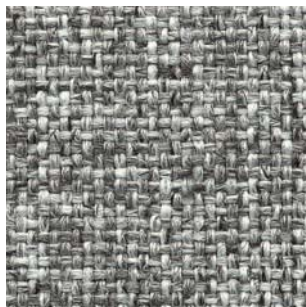
30628



30629



30642



30604



30657



30658



30638



30605



30673



30606

TEL. +39.0362.4981 FAX +39.0362.498900  
WWW.ZANOTTA.IT

ZANOTTA SPA VIA VITTORIO VENETO 57  
20834 NOVA MILANESE MB - ITALIA



COMPOSIZIONE: 30% VISCOSA 19% LINO 14% COTONE 10% POLIESTERE 27% ACRILICO

COMPOSITION: 30% VISCOSE 19% FLAX 14% COTON 10% POLYESTER 27% ACRYLIC

COMPOSITION: 30% VISCOSE 19% LIN 14% COTON 10% POLYESTER 27% ACRYLIQUE

ZUSAMMENSTELLUNG: 30% VISKOSA 19% LEINEN 14% BAUMWOLLE 10% POLYESTER 27% ACRYL

COMPOSICION: 30% VISCOSA 19% LINO 14% ALGODON 10% POLIÉSTER 27% ACRILICO



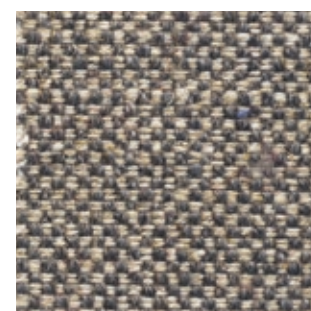
31831



31803



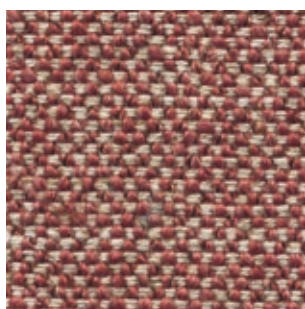
31853



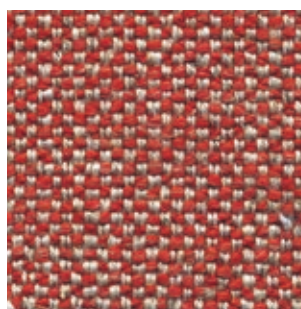
31804



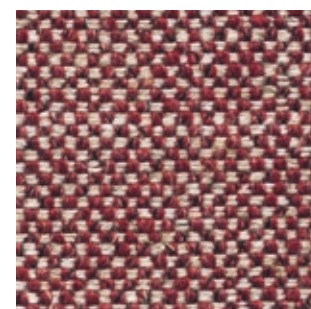
31825



31826



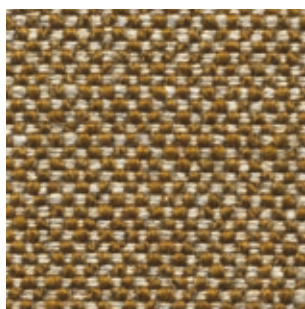
31827



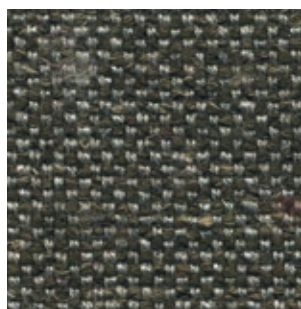
31829



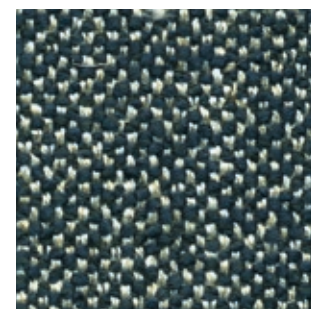
31819



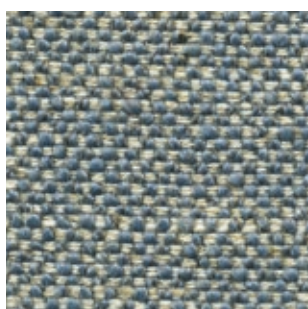
31818



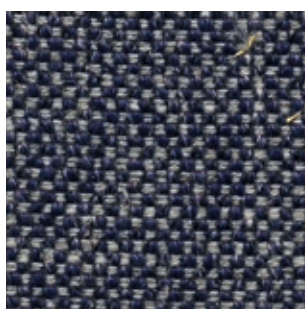
31841



31854



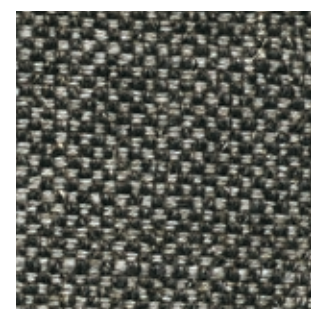
31852



31856



31816



31805



COMPOSIZIONE: 41% COTONE 36% ACRILICA 9% POLIESTERE 7% POLIAMMIDE 3% VISCOSA 2% LANA 2% LINO

COMPOSITION: 41% COTTON 36% ACRYLIC 9% POLYESTER 7% POLYAMIDE 3% VISCOSE 2% WOOL 2% FLAX

COMPOSITION: 41% COTON 36% ACRYLIQUE 9% POLYESTER 7% POLYAMIDE 3% VISCOSE 2% LAINE 2% LIN

ZUSAMMENSTELLUNG: 41% BAUMWOLLE 36% ACRYL 9% POLYESTER 7% POLYAMID 3% VISKOSE 2% WOLLE 2% LEINEN

COMPOSICION: 41% ALGODON 36% ACRILICO 9% POLIÉSTER 7% POLIAMIDA 3% VISCOSA 2% LANA 2% LINO



TEL. +39.0362.4981  
FAX +39.0362.498900  
WWW.ZANOTTA.IT

ZANOTTA SPA VIA VITTORIO VENETO 57  
20834 NOVA MILANESE MB - ITALIA



32001



32030



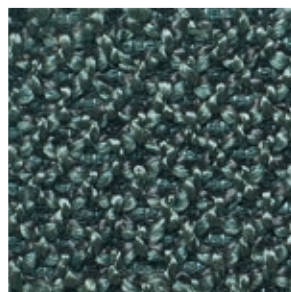
32031



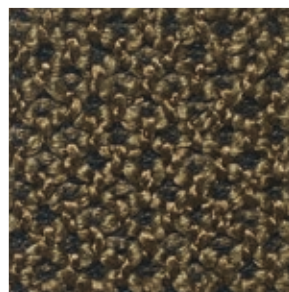
32004



32003



32005



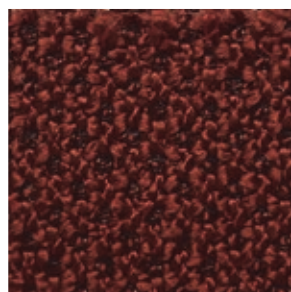
32041



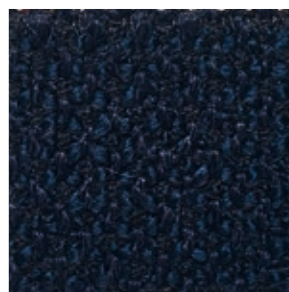
32015



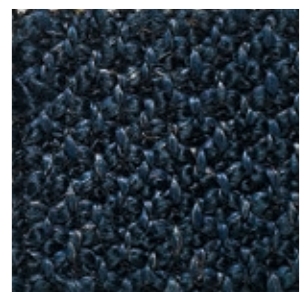
32017



32027



32059



32052



COMPOSIZIONE: 50% COTONE 33% VISCOSA 17% LINO  
COMPOSITION: 50% COTTON 33% VISCOSE 17% FLAX  
COMPOSITION: 50% COTON 33% VISCOSE 17% LIN  
ZUSAMMENSTELLUNG: 50% BAUMWOLLE 33% VISKOSE 17% LEINEN  
COMPOSICION: 50% ALGODON 33% VISCOSA 17% LINO

# Toce



Cat. 30



26503



26593



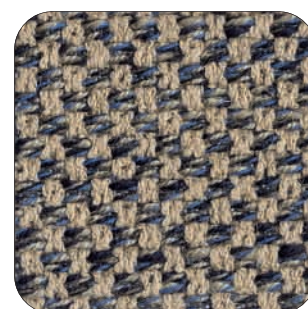
26504



26530



26505



26557



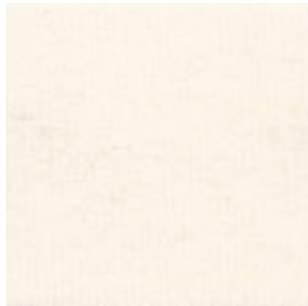
26556



26551



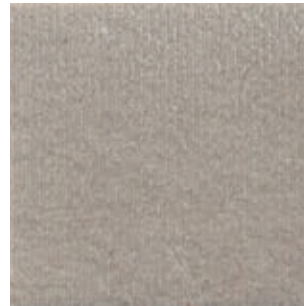
COMPOSIZIONE: 100% COTONE  
COMPOSITION: 100% COTTON  
COMPOSITION: 100% COTON  
ZUSAMMENSTELLUNG: 100% BAUMWOLLE  
COMPOSICION: 100% ALGODON



31902



31914



31954



31903



31923



31925



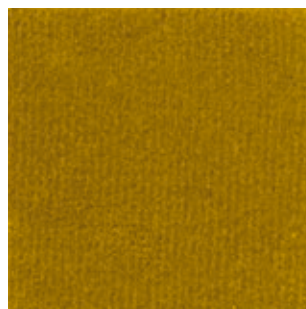
31929



31927



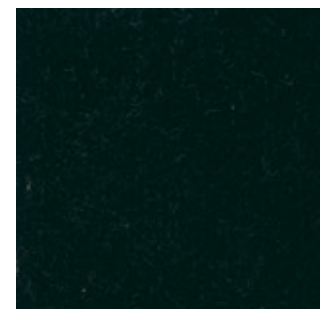
31937



31918



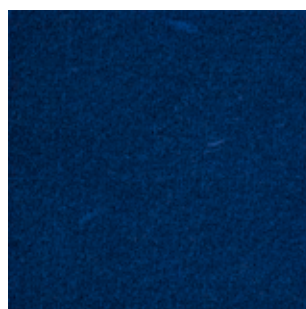
31946



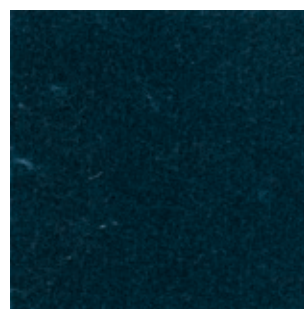
31947



31952



31955



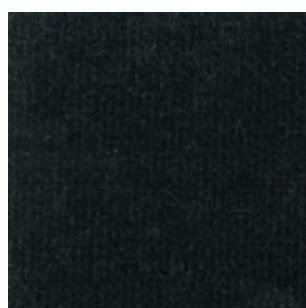
31956



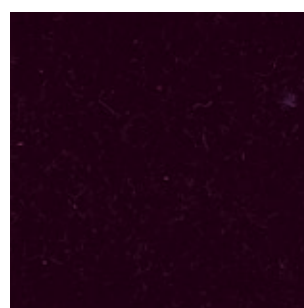
31957



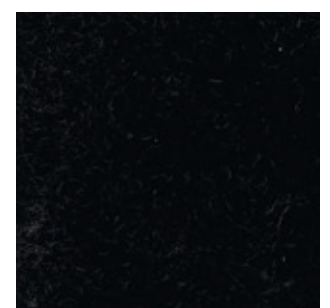
31904



31905



31920



31906



# zanotta:

# taiga

## cat. 30

COMPOSIZIONE: 35% ACRILICO 19% VISCOSA 16% LANA VERGINE 12% POLIESTERE 10% LINO 8% COTONE

COMPOSITION: 35% ACRYLIC 19% VISCOSE 16% PURE WOOL 12% POLYESTER 10% FLAX 8% COTTON

COMPOSITION: 35% ACRYLIQUE 19% VISCOSE 16% LAINE VIERGE 12% POLYESTER 10% LIN 8% COTON

ZUSAMMENSTELLUNG: 35% ACRYL 19% VISKOSE 16% REINE WOLLE 12% POLYESTER 10% LEINEN 8% BAUMWOLLE

COMPOSICION: 35% ACRILICO 19% VISCOSA 16% LANA VIRGEN 12% POLIESTER 10% LINO 8% ALGODON



HEIGHT: 140 cm

LIGHT RESISTANCE: 5 / 6

ABRASION: 40 Q00

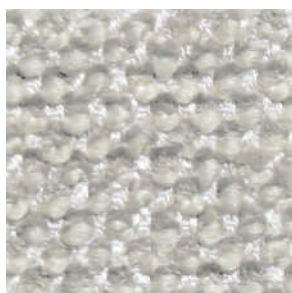
WEIGHT: 1050 g / ml

SHRINKAGE: +/- 2 %

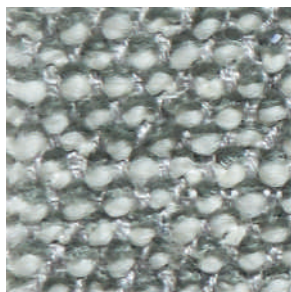
PILING: 4



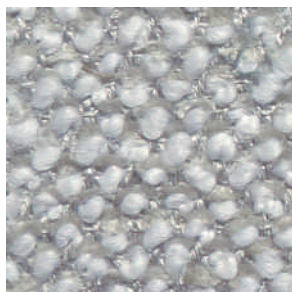
32501



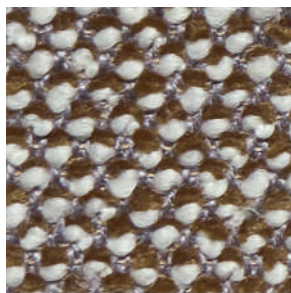
32503



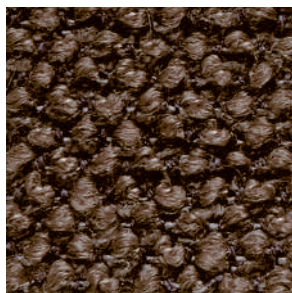
32544



32504



32516



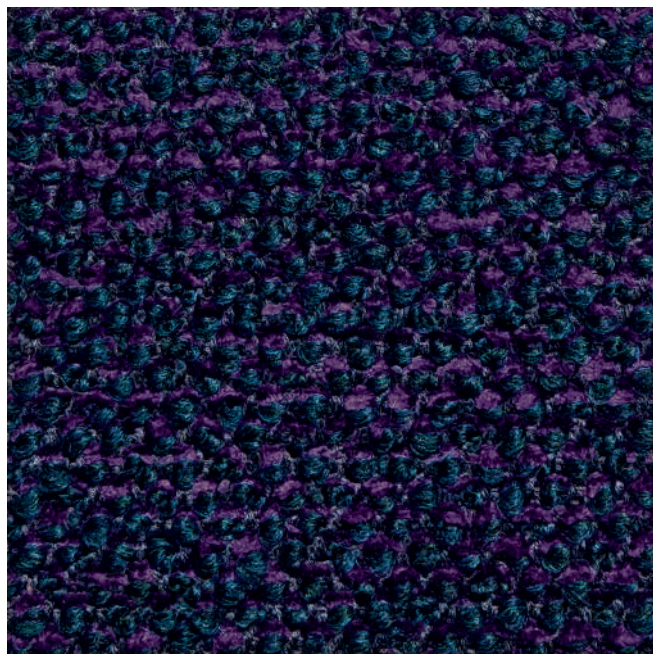
32514



32542



32554



32535

TEL. +39.0362 4981  
WWW.ZANOTTA.IT

ZANOTTA SPA VIA VITTORIO VENETO 57  
20834 NOVA MILANESE MB - ITALIA



# zanotta:

# testura

COMPOSIZIONE: 35% COTONE 41% POLIESTERE RICICLATO\* 24% COTONE RICICLATO \*

COMPOSITION: 35% COTTON 41% RECYCLED POLYESTER\* 24% RECYCLED COTON\*

COMPOSITION: 35% COTON 41% POLYESTER RECYCLE'\* 24% COTON RECYCLE'\*

ZUSAMMENSTELLUNG: 35% BAUMWOLLE 41% WIEDERVERARBEITETES POLYESTER\*  
24% WIEDERVERARBEITETE BAUMWOLLE\*

COMPOSICION: 35% ALGODON 41% POLIESTER RECICLADO\* 24% ALGODON RECICLADO\*

## cat. 30



HEIGHT: 140 cm

LIGHT RESISTANCE: 4

ABRASION: 30 000

WEIGHT: 940 g / ml

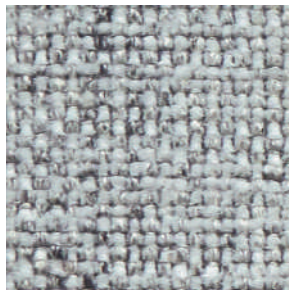
SHRINKAGE: - 2,5 %

PILING: 5

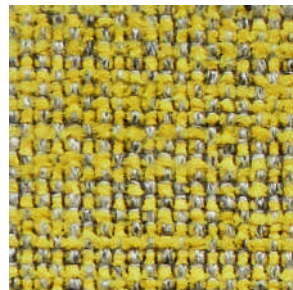
\*Pre-consumer and post-consumer recycled cotton and polyester yarns to meet social and environmental requirements at each stage of the supply chain without the use of potentially harmful chemicals.

TEL. +39.0362.4981  
WWW.ZANOTTA.IT

ZANOTTA SPA VIA VITTORIO VENETO 57  
20834 NOVA MILANESE MB - ITALIA



32601



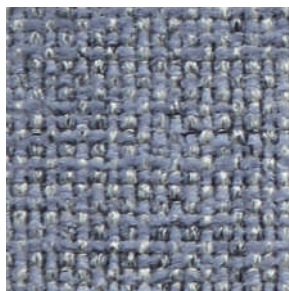
32615



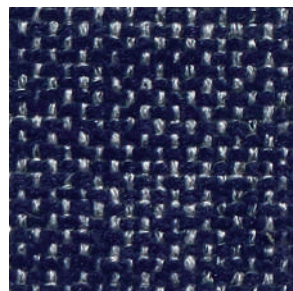
32635



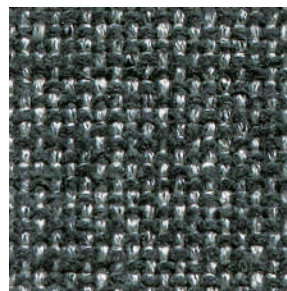
32636



32659



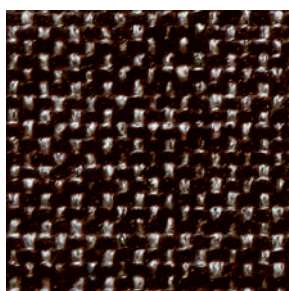
32656



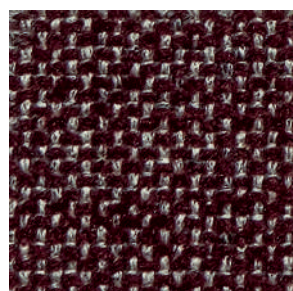
32642



32640



32673



32616



32630



32627



# zanotta:

# trama

## cat. 30

COMPOSIZIONE: 72% LINO 15% COTONE 9% VISCOSA 4% POLIAMMIDE  
COMPOSITION: 72% FLAX 15% COTTON 9% VISCOSE 4% POLYAMIDE  
COMPOSITION: 72% LIN 15% COTON 9% VISCOSE 4% POLYAMIDE  
ZUSAMMENSTELLUNG: 72% LEINEN 15% BAUMWOLLE 9% VISKOSE 4% POLYAMID  
COMPOSICION: 72% LINO 15% ALGODON 9% VISCOSA 4% POLIAMIDA



HEIGHT: **140 cm**

LIGHT RESISTANCE: **4**

ABRASION: **20,000**

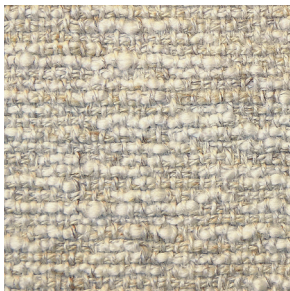
WEIGHT: **1145 g / ml**

SHRINKAGE: **-1,5%**

PILING: **3 / 4**

TEL. +39.0362.4981  
WWW.ZANOTTA.IT

ZANOTTA SPA VIA VITTORIO VENETO 57  
20834 NOVA MILANESE MB - ITALIA



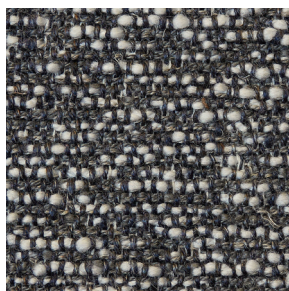
32403



32453



32404



32407



32435